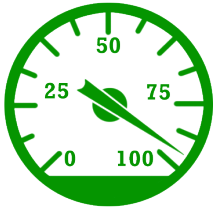


METZLER BANK RECLAIMS UNUTILIZED RESOURCES WITH TURBONOMIC



Increased Resource Utilization

+



Avoided Overprovisioning and Overspending

=



Effortless Environmental Health

SITUATION

Headquartered in Frankfurt/Main Germany, Metzler Bank has provided financial services for over 340 years, making it one of the world's oldest banks. Metzler focuses on providing global capital market services from their offices in Munich, Stuttgart, Cologne/Düsseldorf, Hamburg, Atlanta, Los Angeles, Seattle, Tokyo, Beijing and Dublin.

As Infrastructure Engineer, Thomas Maag manages the bank's physical and virtual infrastructure. He works closely with Robert Schnee, Team Leader of Systems and Network Administration. Their team oversees a VMware vSphere® environment with a VDI infrastructure.

The team consistently struggled to gain intelligent visibility into their VMware estate, guessing as to which resources their workloads needed at any given moment. "Our colleagues kept coming to us asking for more resources for their workloads being used for development, trading platforms, monitoring systems, etc.," said Schnee. "But they did not understand that 'more' does not always equate to 'better.'" As these conversations took place more frequently, Maag and Schnee began to look for a solution.

"Turbonomic automatically identifies underutilized workloads, offering resizing actions to better allocate our resources and more efficiently utilize our infrastructure. We no longer feel we are wasting resources and time unnecessarily."

– Thomas Maag, Infrastructure Engineer

Once downloaded, Turbonomic immediately discovered underutilized virtual machines for the team to size down. "The resize actions have been massively beneficial for us," noted Maag, "We are now confident that we are using our underlying infrastructure more efficiently. In fact, even with our 10% growth of VMs we have not needed to purchase any additional hardware." On top of resizing, the team has automated vMotions across clusters to better maintain healthy performance. "Before Turbonomic, we had to manually intervene and solve any performance issues on the fly," said Schnee. "The control platform has helped us to assure application performance and preserve external client SLAs."

METZLER

COMPANY

Metzler Bank
www.metzler.com

CHALLENGES

- Lack of resource visibility and management
- Inability to control performance in a complex environment
- Inconsistent Quality of Service (QoS) and disruption of virtualized workloads
- Inefficient use of virtual and human resources

TURBONOMIC SOLUTION

- Turbonomic intelligently and automatically senses changes to application demand and adjusts infrastructure supply in real-time to improve utilization and ensure service delivery

METZLER BANK RECLAIMS UNUTILIZED RESOURCES WITH TURBONOMIC

With Turbonomic automated across the environment, the team spends less time monitoring and manually allocating resources to the virtual estate. “Even after host maintenance, Turbonomic takes care of our virtual hosts and machines for us,” said Maag.

FINDING SUPPORT IN COMMUNITY

“We find valuable and helpful documentation on the Green Circle Community forums,” said Schnee. “If we have a product question or need a how-to guide we always start by looking there.”

With Turbonomic’s automated vMotions and actionable resize recommendations, the Metzler team is able to maintain a continuous state of health within their environment.

RESULTS

- *Autonomic platform drives real-time performance across a diverse environment*
- *Reclaimed unused resources from underutilized workloads*
- *Avoided unnecessary spending on hardware for physical infrastructure*
- *Reduced time spent monitoring and manually resolving problems/questions*

“With Turbonomic in automation, managing our environment has become completely effortless.”

Robert Schnee
Team Leader of Systems and Network Administration
Metzler Bank

ABOUT TURBONOMIC

Turbonomic delivers an autonomic platform where virtual and cloud environments self-manage in real-time to assure application performance. Turbonomic’s patented decision engine dynamically analyzes application demand and allocates shared resources to maintain a continuous state of application health.

Launched in 2010, Turbonomic is one of the fastest growing technology companies in the virtualization and cloud space. Turbonomic’s autonomic platform is trusted by thousands of enterprises to accelerate their adoption of virtual, cloud, and container deployments for all mission critical applications.